

World Class Index (WCI)

Aker Well Service AS

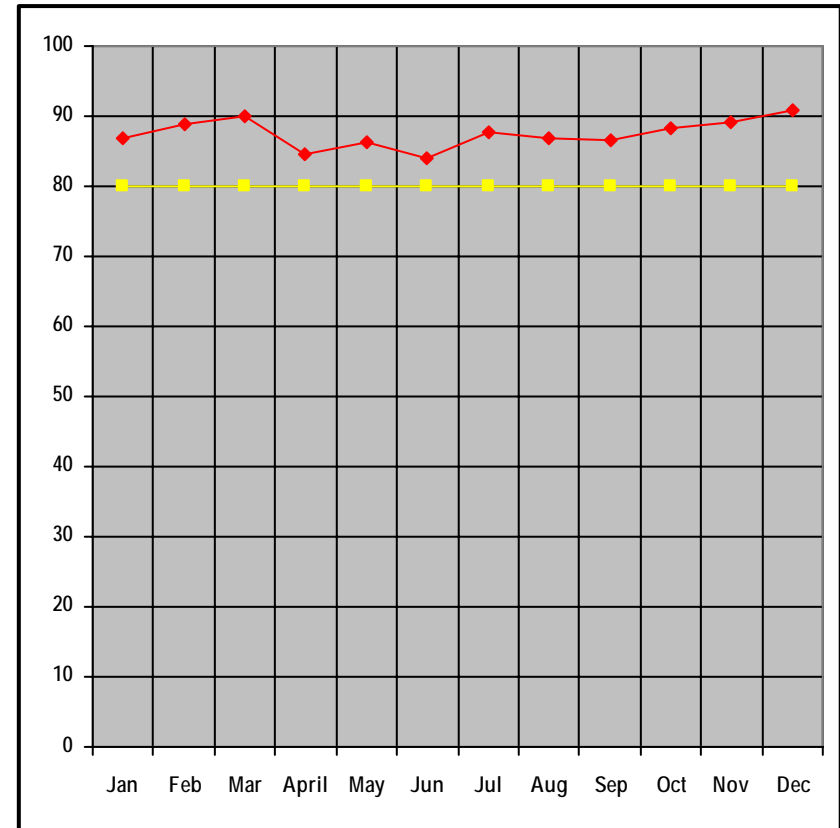
Towards World Class Performance

December 2008

Key Performance Indicators

AREA	Measure (KPI)	2008				
		Target	Target	Actual	Weight	Score
HSE	Sick leave (%)	3,5	3,5	3,2	5,0	5,0
	Lost Time Injuries - LTI's	0,0	0,0	0,0	7,5	7,5
MINDSET	High Risk Potential Incidents	0,0	0,0	0,0	7,5	7,5
	Waste recycling/segreg (% of total)	100,0	100,0	78,2	5,0	4,0
CUSTOMER DRIVE	External funding of R&D budget >50%	100,0	100,0	37,0	5,0	1,9
	Success rate tenders (in%)	100,0	100,0	100,0	5,0	5,0
	Operational factor all services (in %)	98,0	98,0	98,1	15,0	15,0
	Correct deliveries in % (content & time)	100,0	100,0	99,4	5,0	5,0
PEOPLE & TEAMS	Appraisal interviews in % of workforce	33,0	41,0	59,0	4,0	4,0
	Mgmt. participation in team buildings	10,0	10,0	10,0	4,0	4,0
	Synergi reports (expired/reported in %)	5,0	5,0	102,0	3,0	0,1
	>90% of all intern.courses at WIA	100,0	100,0	100,0	3,0	3,0
	Turnover <5% of work force	5,0	5,0	2,0	3,0	3,0
	Implem. of operating system all locations	100,0	100,0	75,0	3,0	2,3
DELIVERING RESULTS	Establish International Resource Pool	100,0	100,0	70,0	5,0	3,5
	EBIT (%)	100,0	100,0	100,0	15,0	15,0
	Revenue (%)	100,0	100,0	100,0	5,0	5,0
					100,00	90,72

World Class Index



World Class Index



Copyright

Copyright of all published material including photographs, drawings and images in this document remains vested in Aker Solutions and third party contributors as appropriate. Accordingly, neither the whole nor any part of this document shall be reproduced in any form nor used in any manner without express prior permission and applicable acknowledgements. No trademark, copyright or other notice shall be altered or removed from any reproduction.